

Letters

Magnetic Domain Patterns in Small Single Crystal SmCo_5 Particles

The publication of Hoffer and Strnat [1], where the extremely high magnetic anisotropy of YCo_5 was demonstrated, initiated much intensive research on the magnetic properties of the ferromagnetic rare-earth cobalt alloys. Several authors [2-4] have shown that high quality permanent magnets with energy products as high as 23 MGOe can be produced from RECo_5 compounds where RE stands for Y, La, Ce, Pr, Nd, or Sm. The good magnetic properties of the hexagonal RECo_5 compounds stem from the fact that these intermetallic compounds combine high saturation magnetisation with high uniaxial magnetic anisotropy. High coercive fields can be obtained in powders by simple grinding of the compound.

For reasons as yet unknown SmCo_5 powders show the highest coercive field, MH_c , of typically 10000 to 20000 Oe. It has also been demonstrated [5, 6] that the coercive field depends markedly on particle size. The coercive field increases with decreasing particle size, goes through a maximum for particles of $\sim 10 \mu\text{m}$ diameter and decreases again for smaller particles. The critical diameter below which the formation of a Bloch wall is energetically unfavourable (that is, the particle consists of a single domain) is, for SmCo_5 , $\sim 0.3 \mu\text{m}$. This is much smaller than the size for which the optimum magnetic properties occur. Thus the magnetisation reversal of a fully magnetised $10 \mu\text{m}$ particle must proceed by nucleation and growth of domains of opposite polarity [5, 7, 8]. It is therefore important to study the exact structure of the domain patterns and the mechanism of nucleation and displacement of Bloch walls in small RECo_5 grains. Here we report on the first observation of domain patterns on small (typically 10 to $100 \mu\text{m}$) SmCo_5 single crystals.

A commercial SmCo_5 compound (manufacturer: Th. Goldschmidt AG, Essen, Germany) was ground in a vibration mill in air. This produces mostly single-crystal particles. After etching (1 min in a solution of 100ml H_2O , 10ml HCl, 1 ml H_2O_2) the powders were embedded in a resin and aligned in an intensive magnetic field of ~ 80000 Oe. Then the samples were demagnetised as thoroughly as possible in a decreasing alternating field. Afterwards the samples were

polished and the magnetic domains were observed by means of the magnetic Kerr effect using a Zeiss Ultraphot 3 microscope equipped with polarisation optics.

Figs. 1 and 2 show the domain structures on small SmCo_5 single crystals, the hexagonal axes being perpendicular and parallel to the plane of observation respectively. Similarly prepared SmCo_5 powder with a particle size between 10 and $25 \mu\text{m}$ has a coercive field MH_c of about 10000 Oe. Fig. 3 shows the domain pattern on a c -plane surface of a large SmCo_5 particle. These

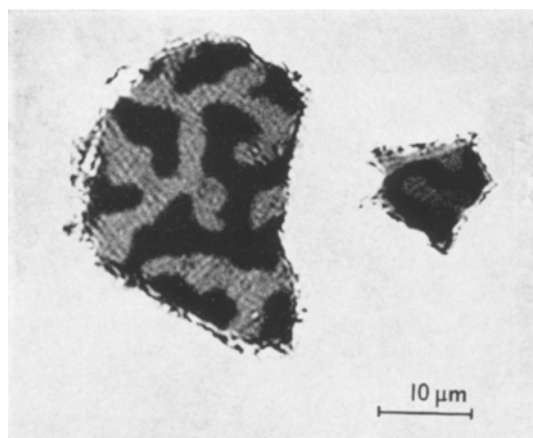


Figure 1 Magnetic domain pattern on small single-crystal SmCo_5 particles. The c -axis is perpendicular to the plane of observation. Such SmCo_5 powder has a coercive field MH_c of ~ 10000 Oe.

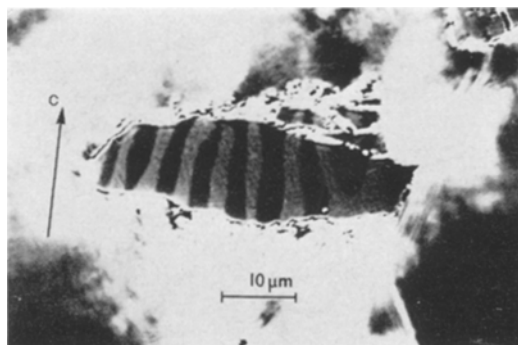


Figure 2 Magnetic domain pattern on a small single-crystal SmCo_5 particle. The c -axis is parallel to the plane of observation. Such SmCo_5 powder has a coercive field MH_c of ~ 10000 Oe.

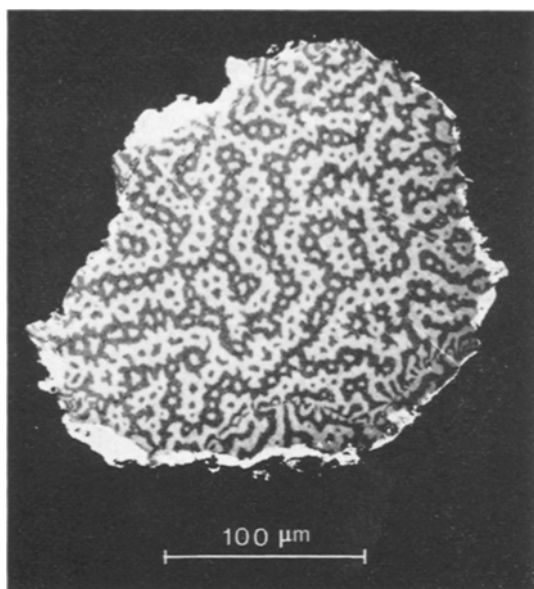


Figure 3 Magnetic domain pattern on a large SmCo_5 particle. The c -axis is perpendicular to the plane of observation.

domain structures correspond approximately to the demagnetised state of the particles. The domain structure of the small SmCo_5 crystals consists of sheets containing the axis of easy magnetisation (the c -axis) and extending through the crystal (fig. 2). Cone-shaped surface domains of reversed magnetisation appear in thick crystals (Fig. 3); these surface domains are absent on crystals smaller than about $25 \mu\text{m}$. The domain patterns of SmCo_5 resemble closely those of hexagonal Co [9-11] and MnBi [12]. They are typical for a hexagonal crystal with a direction of easy magnetisation parallel to the c -axis and a large magnetic anisotropy [13, 11]. Fig. 4 shows the domain pattern on a polycrystalline particle. Most domains are continuous at the grain boundaries. In some instances reverse domains appear to have been nucleated at a grain boundary. This may explain the low coercive field of polycrystalline SmCo_5 .

Using the magnetic Kerr effect we have observed the magnetic domains on SmCo_5 particles as small as $10 \mu\text{m}$. Preliminary work indicates that the same technique can be used to study the nucleation and growth of domains in RECo_5 particles. A systematic study is under way.

References

1. G. HOFFER and K. STRNAT, *IEEE/Trans. Magnetism* **MAG 2** (1966) 487.

*Summer student, Swiss Federal Institute of Technology, Zürich, Switzerland.

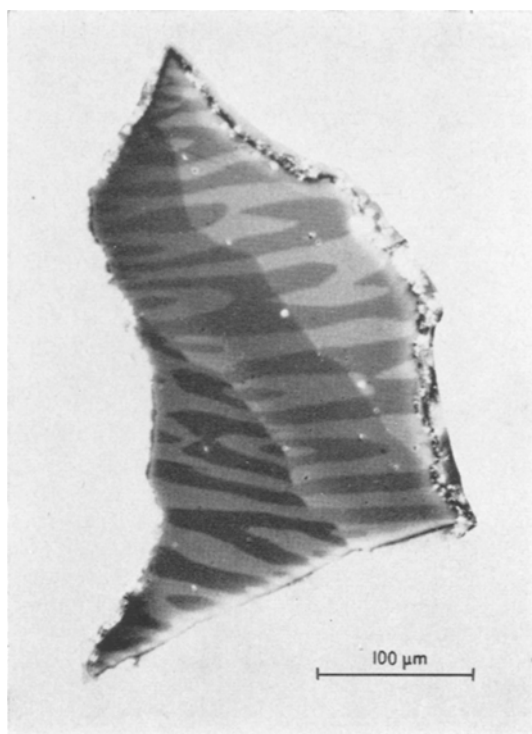


Figure 4 Magnetic domain pattern on a polycrystalline SmCo_5 particle.

2. D. K. DAS, *ibid* **MAG 5** (1969) 214.
3. K. H. J. BUSCHOW, P. A. NAASTEPAD, and F. F. WESTENDORP, *J. Appl. Phys.* **40** (1969) 4029.
4. M. G. BENZ and D. L. MARTIN, *Appl. Phys. Letters* **17** (1970) 176. D. L. MARTIN and M. G. BENZ, *Journal de Physique* (1971) to be published.
5. J. J. BECKER, *J. Appl. Phys.* **39** (1968) 1270.
6. K. H. J. BUSCHOW and W. A. J. J. VELGE, *Z. angew. Phys.* **26** (1969) 157.
7. J. J. BECKER, *IEEE/Trans. Magnetism* **MAG 5** (1969) 211.
8. H. ZIJLSTRA, *ibid* **MAG 6** (1970) 179. *Idem*, *J. Physique* (1971) to be published.
9. R. M. BOZORTH, *J. Phys. Radium* **12** (1951) 308.
10. W. ANDRÄ, *Ann. Physik.* **15** (1954) 135.
11. Y. TAKATA, *J. Phys. Soc. Japan* **18** (1963) 87.
12. B. W. ROBERTS and C. P. BEAN, *Phys. Rev.* **96** (1954) 1494.
13. J. B. GOODENOUGH, *ibid* **102** (1956) 356.

Received 19 November

and accepted 24 November 1970

K. BACHMANN
A. BISCHOFBERGER*
F. HOFER

Brown Boveri Research Center,
5401 Baden, Switzerland